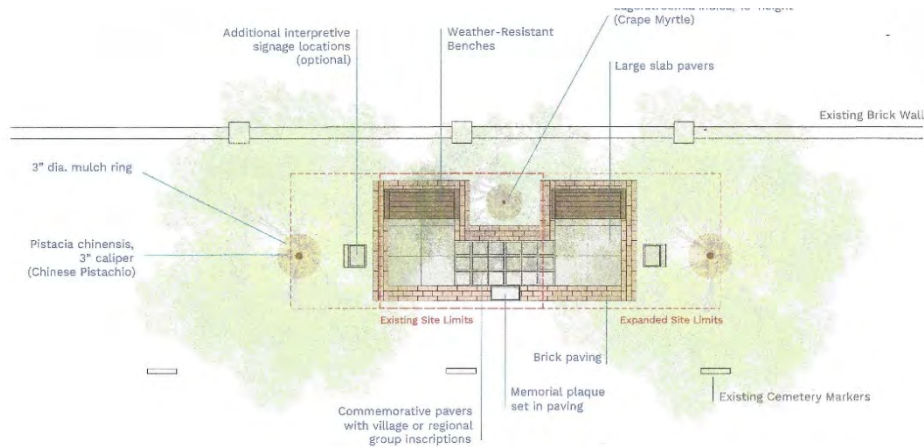


Memorial Engraved Brick Sponsorship



Names of individuals, family and friends, or associations can be engraved on 4" X 8" bricks and embedded into the Chinese American Memorial. They can be in English text or traditional or simplified Chinese characters, and a corresponding digital entry (including photos) will be added to an interactive data base maintained by the 1882 Foundation. Names of ancestral districts in China can be engraved in traditional Chinese characters on 12" x 12" pavers at the center of the memorial.

Brick sponsorships provide a steady income to maintain the site and support commemorative events. They also finance interpretive signage and a digital archive of the stories behind the names engraved on the bricks.

Adding bricks (identifying stories and individuals from around the country) gives the memorial a dynamic quality as was the Chinese American experience throughout America's history and continuing today – the red bricks representing individuals and their contributions joined together as a community, and the inner pavers reminding visitors of the traditions, geography, and history that gave the community its character.

The benches are places to rest as did the hundreds of migrants who struggled for better lives and who were laid briefly at this location before their bones were returned to China. The memorial is a place of contemplation in full view of all the peoples who surrounding the site also contributed to the American nation. The red-barked and white flowers of the crepe myrtle that thrives between the benches and the Ginkgo Tree (an ancient tree from China) add a sense of new and firm roots and shady comfort for the visitors.







Chinese American Memorial at Congressional Cemetery

ENGRAVED BRICK SPONSORSHIP

We are delighted that you are interested in sponsoring an engraved brick to be placed in Chinese American Memorial at the historic Congressional Cemetery. Each 4" X 8" brick can be dedicated to individuals, families and clans, villages, or associations. In addition, sponsors can load images and short narratives in an interactive web site maintained by the 1882 Foundation as an index to the bricks and an archive of mini histories.

Sponsorships are deductible. The Foundation reserves the right to reject inappropriate engravings.

Please provide the following information and check to the address above payable to the "1882 Foundation" or emailed to info@1882foundation.org. Paypal can also be used.

Name: _____

Street Address: _____ City/State: _____ Zip: _____

Telephone: _____ Email Address: _____

No. of Bricks Sponsored: _____ X \$250 = \$ _____; No. of Pavers: _____ X \$1,000 = \$ _____

Text for brick – Up to 3 lines, limit 15 characters/spaces per line:

Text in Chinese Characters: Traditional or Simplified

Inscription & Data Entry Guidelines: The following standards apply to inscribed bricks placed on the Historic Chinese American Memorial and in the associated index and data base maintained by the 1882 Foundation. The Inscription Advisory Group will review all inscriptions and associated data entry requests made on behalf of donors to the 1882 Foundation, through the purchase of a brick. The Inscription Advisory Group reserves the right to deny any inscription or data entry that fails to conform to the stated standards.

Individuals, schools, school groups, family and civic associations, or governmental entities may request an inscribed brick when making the required minimum donation of \$250 or \$1,000 for a paver. Inscriptions for pavers are limited to the name of the district in China (such as Taishan, Kaiping, Sunhui, Changla...) where Chinese Americans migrated from, and the engraving will be in a standard traditional Chinese font selected by the Inscription Advisory Group. For bricks, all inscriptions and data entries must fit within the established limit of numbers of characters for each line -a maximum of three lines with a maximum of 15 characters on each line. They can be in English script, romanization, or traditional or standard Chinese characters. Data entries associated with each brick cannot exceed three photo images and 250 words.

Engravements on bricks are of names of person (s), family, village, or associations only. There will be no titles, honorifics, or dates or birth and death, or remembrances such as "In Memory of" or "In Honor of." These descriptions will be reserved for the data entry associated with the brick. These entries can include photos (send only scanned copies or smart phone copies of the person or representative object(s) (a letter, a naturalization certificate, a cookbook, a wok, a banner, a medal) of the person or place or event being remembered or honored. The rank of the person, the unit they served, or accomplishment achieved can be mentioned here. For a brick that honors a mother and father, the data entry could be a wedding picture and a short story of how they met. The data entries can be poetry or a short story. These are "mini-histories" of the Chinese American experience that we want to preserve. The narrative cannot exceed 250 words.

The Inscription Advisory Group will work with donors on narrowing their stories to the limited number. For stories that must be longer, the Inscription Advisory Group will summarize the narrative and forward the entire story to the Chinese American Heroes Project in San Francisco for consideration in their archives and publications.

For bricks, punctuation marks and special characters count toward the 15-character limit and includes comma, semi-colon, period, quotation mark, dash, hyphen, and ampersand.

Additional Information:

- Inscriptions NOT ALLOWED include: any editorial, subjective, or inflammatory statement.
- Donors will be notified if changes in the requested inscription are required by the Inscription Advisory Group, and donations can be refunded if the inscription changes are not acceptable, and requested bricks and entries will not be completed.
- Inscriptions will appear in all upper-case letters in a standard font style. All Chinese inscriptions will be a standard font decided the Inscription Advisory Group.
- Inscriptions will be centered on the brick.
- The 1882 Foundation will determine the final placement of the bricks, making every attempt to place bricks together that are ordered together.
- The inscribed bricks and information and images of the data entry become the property of the 1882 Foundation which has rights to photograph, copy, publish, and quote from them for educational and promotion purposes.
- Donors may contact the 1882 Foundation do discuss any questions or concerns about a possible inscription at info@1882foundation.org.

Thank you for your sponsorship!

The 1882 Foundation is a 501(c) (3) non-profit organization

